



Asbestos Inventory

For Any Questions Contact Mike Whitford

A.G. Cox Middle School

Material	Location
12"X12" green floor tile and black mastic	Throughout the 100 Wing
Black tar paper under all floor tile	Throughout the 100 Wing
12"X12" light green floor tile and mastic	Halls of the 120 Wing
12"X12" black border floor tile and mastic	Halls of the 120 Wing
9"X9" green floor tile and black mastic	Throughout the 120 Wing
9"X24" black border floor tile and black mastic	Throughout the 120 Wing
9"X9" light brown floor tile and black mastic	Athletic Storage Room in the Gymnasium
12"X12" off-white floor tile and black mastic	Throughout the old section of the 200 Wing
Chalkboards and chalkboard mastic (assumed positive)	Classrooms 100 – 103, 105, 106, 108, 109, and 111
Chalkboards and chalkboard mastic (assumed positive)	Classrooms 120, 122, 123 – 126 in the 120 Wing
Laboratory countertop	Classroom 108 in the 100 Wing
Cloth gaskets on HVAC ductwork	Mechanical rooms 1-5 in the old section of the 200 Wing
Rope gaskets on the boiler	200 Wing Boiler Room
Exterior window glazing	Throughout the 120 Wing
Exterior window glazing	Throughout the Gymnasium and Locker Rooms
Exterior window glazing	Throughout the old section of the 200 Wing
Various size transite panels	Above and below the windows throughout the 100, 120, and 200 Wings
Exterior 4'X2' gray soffit panels	Throughout the old section of the 200 Wing



Asbestos Inventory

For Any Questions Contact Mike Whitford

Ayden Elementary School

Material	Location
9"X9" red floor tile and mastic (covered by floor tile)	Classroom B-5
9"X9" black border floor tile and mastic (covered by floor tile)	Classroom B-5
9"X9" white floor tile and mastic (covered by carpet and floor tile)	Classroom B-6
Black floor tile mastic	Cafeteria
Black floor tile mastic	B, C, and D Wing Storage Rooms, B Wing Custodial Closet, and hallways of the B, C, and D Wings
9"X9" tan floor tile and mastic	HVAC Closet in C-2
Fire doors	Throughout the B and C Wings
Cloth gasket on HVAC duct	Above the ceiling in classroom D-12
Exterior window glazing	Throughout the B, C, and D Wings
White corrugated exterior fascia border (covered by roofing metal)	D Wing



Asbestos Inventory

For Any Questions Contact Mike Whitford

Ayden Griffton High School

Material	Location
12"X12" beige floor tile and black mastic	Throughout the Main Facility
Laboratory countertops	Classrooms 201 – 204
Laboratory fume hood	Classroom 202
Black mastic on thermal system insulation lines	Throughout the Main Facility above the drop ceiling and in the mechanical rooms
Insulation located on hot water tank	Main Mechanical Room
Fire doors	Throughout the Main Facility
Window glazing	Throughout the Main Facility
Transite panels	Below the windows throughout the Main Facility
12"X12" white ceiling	Mobile Unit #4 (740-66-3)
12"X12" white ceiling	Mobile Unit ROTC (740-66-26)
12"X12" white ceiling	Mobile Unit ROTC (740-66-59)
12"X12" gray floor tile and mastic (covered)	Mobile Unit #4 (740-66-3)
9"X9" beige floor tile and mastic (covered)	Mobile Unit ROTC (740-66-26)

Asbestos Inventory

For Any Questions Contact Mike Whitford

Belvoir Elementary School

Material	Location
12"X12" gold floor tile and black mastic	Throughout the 100 Wing
12"X12" off-white floor tile (covered by floor tile)	200 and 300 Hallways
12"X12" white floor tile	Classroom 303 and the Teachers Lounge
9"X9" black floor tile and mastic (covered by floor tile)	Classroom 303
9"X9" white floor tile and mastic (covered by floor tile)	Classroom 303
12"X12" gray floor tile and black mastic	Cafeteria and adjoining hallway
9"X9" tan floor tile and mastic (covered by floor tile)	Gymnasium Building (Removed in Gym)
9"X9" green floor tile and mastic (covered by floor tile)	Gymnasium Building (Removed in Gym)
12"X12" green floor tile and mastic	Classroom 403, Kiln Room, and Gymnasium Lobby
Fire doors	Main hallway of the 200 and 300 Wings
Chalkboards and chalkboard mastic (assumed positive)	Classrooms 200, 201, 207, and 300 – 306
Exterior window glazing	Throughout the Gymnasium section
Transite panels	Above the drop ceiling on the exterior and corridor walls in Classrooms 300 – 306
Exterior white decorative fascia border	Below the roof line around the 300 Wing
12"X12" unknown color floor tile and mastic (covered by floor tile and carpet)	Classrooms 28 & 29 (MU 740-84-70)

Asbestos Inventory

For Any Questions Contact Mike Whitford

Bethel School

Material	Location
12"X12" white ceiling tile	Classrooms 310 – 312 above 2'X2' drop ceiling
12"X12" off-white floor tile	Throughout the Main Office and 100 and 200 Wings
Black floor tile mastic	Classrooms 310 – 317 and hallways of the 300 Wing
12"X12" white floor tile and black mastic	Back hallway of the 300 Wing and front foyer of Gymnasium
12"X12" brown border floor tile and black mastic	Back hallway of the 300 Wing and front foyer of the Gymnasium
9"X9" gray floor tile and mastic (covered by asbestos floor tile)	Gymnasium foyer
9"X9" tan floor tile and mastic	Storage Room beside 313, Storage Room in 313, Coaches Office, and Equipment Storage Room in the 300 Wing
Tan linoleum flooring	Baseball Concession Stand
Chalkboards and chalkboard mastic (assumed positive)	Classrooms 101 – 108, 201 – 204, and 310 – 313
Cloth gaskets on HVAC duct	Mechanical Rooms adjacent to the Media Center and behind the Main Office
Exterior window glazing	Throughout the Gymnasium Building
Crème transite panels	Above and below the windows in Cafeteria
Exterior transite panels	Below roofline around the Gymnasium Building

Asbestos Inventory

For Any Questions Contact Mike Whitford

C.M. Eppes Middle School

Material	Location
Sprayed/Troweled-on white ceiling surfacing material	Classroom 107
9"X9" white with black accents floor tile	Classrooms 105-108, 112-114, 203-209, the Media Center, and adjoining storage rooms of the Main Facility
12"X12" off-white floor tile	Classrooms 115 – 119 and 210 – 218
9"X9" white with black accents floor tile and mastic	Offices located adjacent to the Band Room
12"X12" beige floor tile and mastic	Classrooms 160 through 163
9"X9" tan floor tile	Annex Building I (Technology)
12"X12" beige floor tile	Annex Building II (Testing and Servers)
Chalkboards and chalkboard mastic (assumed positive)	Classrooms 101 – 114 and 202 – 209
Cloth gasket on HVAC unit	Storage Room in Men's Locker Room
Tar located on steam/condensate pipe insulation	2 nd floor Mechanical Room
Tar located on steam/condensate elbow insulation	2 nd floor Mechanical Room
Tar located on thermal system insulation on the steam, condensate, and hot water lines	Pipe tunnel between Main Building & Annex Building I (Technology)
Insulation on hot water storage tank	Boiler Room
Hard pipe insulation elbows and tar	Throughout the Main Facility crawlspace
Exterior window glazing	Throughout the Main Facility
Exterior window glazing	Throughout the Field House
Exterior light tan transite panels	Below the roofline around the Annex Building II – Testing and Servers (1970 Building)



Asbestos Inventory

For Any Questions Contact Mike Whitford

Central Office

Material	Location
12"X12" tan floor tile and black mastic	Throughout the third and fourth floors where occupied by Pitt County Schools
12"X12" tan floor tile and black mastic	Throughout the fifth floor

Asbestos Inventory

For Any Questions Contact Mike Whitford

Chicod School

Material	Location
9"X9" olive floor tile and black mastic (covered by nonasbestos floor tile and plywood)	Throughout the 1 st and 2 nd floor
12"X12" green floor tile and mastic	Classrooms 101 and 105
Unknown size tan floor tile (covered by asbestos floor tile)	Classrooms 101 and 105
12"X12" brown floor tile and black mastic	Hallway between the locker rooms
12"X12" light tan floor tile and mastic	Stairwells of the two story building
12"X12" dark gold floor tile	Classrooms 211 and 212
Black floor tile mastic	Classrooms 301 – 304 and the adjoining hallways
12"X12" dark gold floor tile	Classrooms 305 – 308 and the adjoining hallway
12"X12" light brown floor tile	Classrooms 306 and 308
12"X12" white wall tile and tile mastic	Stage area in the Gymnasium
Chalkboards and chalkboard mastic (assumed positive)	Classrooms 101, 105, 109, 112, 117, 201 – 212, 301 – 304 in the Main Facility
Fire doors	Two-story building
Aircell insulation on steam lines	Between the roof and wood deck of the Gymnasium
Aircell insulation on steam lines	Between interior and exterior walls in Classrooms 301 – 304
Window glazing	Classrooms 103, 105, and 107
Window glazing	Classrooms 211 and 212



Asbestos Inventory

For Any Questions Contact Mike Whitford

Creekside Elementary School

Material	Location
12"X12" white ceiling tile	Classroom MU-1 (Mobile Unit 740-66-5)
9"X9" blue floor tile	Classroom MU-4 (Mobile Unit 740-66-65)
12"X12" light green floor tile and mastic	Classroom MU-6 (Mobile Unit 740-66-14)
12"X12" black floor tile and mastic	Classroom MU-6 (Mobile Unit 740-66-14)

D.H. Conley High School

Material	Location
12"X12" off-white floor tile and black mastic	Throughout the 100 and 200 Wings
Black floor tile mastic	Throughout the 300 Wing
Laboratory countertops	Classrooms 108, 109, 208, and 210
Fume hoods	Classroom 108
Black mastic on thermal system insulation on the hot and cold water lines	Throughout the 100 and 200 Wings above the drop ceiling and in the mechanical rooms
Light gray window glazing	Throughout the 100 and 200 Wings
Exterior dark brown transite panels of various sizes	Below the roofline at various locations around the Main Facility



Asbestos Inventory

For Any Questions Contact Mike Whitford

E.B. Aycock Middle School

Material	Location
12"X12" olive floor tile and black mastic	Throughout the Main Facility
Black floor tile mastic	Hallway in front of Classroom 31 and in the Media Center
9"X9" off-white floor tile and black mastic	Classrooms 70 and 71
Laboratory countertops	Classrooms 12, 16, 18, 19, 25, 42, 45, 48, 50, 51, 56, and 57
Insulation located on the hot water storage tank	Boiler Room
Rope gaskets on the boiler	Boiler Room
Window glazing	West wall of the Main Facility
Various size cream transite panels	West wall of the Main Facility above and below the windows of the Main Facility
Exterior wall border	Outside above the Cafeteria



Asbestos Inventory

For Any Questions Contact Mike Whitford

Elmhurst Elementary School

Material	Location
9"X9" off-white floor tile and black mastic	Cafeteria, Classrooms 5, 6, and 29, Teachers Lounge, Safe, Lobby, and throughout the hallways
9"X9" black border floor tile and mastic	Cafeteria, Classrooms 5, 6, and 29, Teachers Lounge, Safe, Lobby, and throughout the hallways
9"X9" tan floor tile with burgundy accents and mastic (covered by floor tile in Classroom 12)	Classrooms 1 – 4 and 7 – 14
9"X9" burgundy border floor tile and mastic (covered by floor tile in 12)	Classrooms 1 – 4 and 7 – 14
9"X9" dark green floor tile and mastic (covered by floor tile)	Hallway outside of the Media Center
9"X9" red floor tile and black mastic (covered by floor tile)	Classrooms 15 – 18
9"X9" off-white floor tile	Bathroom thresholds in Classrooms 17 and 18
9"X9" brown floor tile and mastic (covered by carpet)	Throughout the Media Center
Chalkboards and chalkboard mastic (assumed positive)	Classrooms 1 – 10, Assistant Principal's Office, Counselor's Office, Conference Room, and Lounge
2'X4' insulation panel	Located between the radiators and counter tops in classrooms throughout the Main Facility
Fire doors	Throughout the Main Facility
Aircell pipe insulation on the hot water line	Storage room adjoining the Boiler Room
Exterior window glazing	Throughout the Main Facility
White decorative exterior fascia border	Below the roofline around the Main Facility

Facility Services

Material	Location
Black floor tile mastic	Throughout the office areas of the Third Street Warehouse

Asbestos Inventory

For Any Questions Contact Mike Whitford

Falkland Elementary School

Material	Location
12"X12" light brown floor tile and mastic	Teachers Lounge, SIMS Office, and Front Office
12"X12" dark brown border floor tile mastic	Teachers Lounge
12"X12" white floor tile and mastic	100 Wing hallway and restroom lobby of Classrooms 103 and 105
9"X9" tan floor tile and black mastic	Classrooms 103 – 105, 117, Custodial Room, 100 Hall Storage Room, and 100 Wing hallway
12"X12" light tan floor tile (partially covered by carpet)	Classrooms 103 and 105
12"X12" brown speckled border floor tile (partially covered by carpet)	Classrooms 103 and 105
9"X9" gray floor tile and mastic (covered by floor tile)	Classroom 109
Gray linoleum flooring	Restrooms in Classroom 117
12"X12" black border floor tile and mastic	Rooms 205 – 207
12"X12" olive floor tile and mastic (covered by floor tile and or carpet)	Rooms 205 – 207
Chalkboards and chalkboard mastic (assumed positive)	Classrooms 100, 102 – 105, 109, 110, 112, and 114 – 116
Aircell pipe insulation, elbows, and joints on steam lines	Throughout the 100 Wing above the plaster ceiling
Exterior white decorative border (covered by vinyl siding)	Around the roofline of the Main Facility
Exterior white Soffit material (covered by vinyl siding)	Around the Main Facility
12"X12" white ceiling tile	Classroom T-3 (Mobile Unit 740-66-80)
12"X12" brown floor tile and mastic (covered by floor tile)	Classroom T-3 (Mobile Unit 740-66-80)
12"X12" off-white floor tile and mastic (covered by floor tile)	Classroom T-3 (Mobile Unit 740-66-80)
12"X12" white floor tile and mastic (covered)	Classroom T-4 (Mobile Unit 740-66-1)



Asbestos Inventory

For Any Questions Contact Mike Whitford

Farmville Central High School

Material	Location
Sprayed-on ceiling material	Throughout the Auditorium
9"X9" tan floor tile and black mastic	Throughout the Main Facility
9"X9" tan floor tile and mastic	Janitorial Room near Classroom 307
Laboratory countertops	Classrooms 201 – 204
Fume hoods	Classrooms 202 and 204
Fire doors	Throughout the Main Facility
Black mastic on thermal system insulation lines on the water lines	Throughout the Main Facility above the drop ceiling and in the mechanical rooms
Pipe insulation elbows	Mechanical Room in the Guidance Offices
Insulation on the hot water storage tank	Main Mechanical Room
Pipe insulation elbows on the hot water lines from the hot water storage tank	Main Mechanical Room
Window glazing	Throughout the Main Facility
Various size transite panels	Below the windows throughout the 1971 Section

Farmville Middle School

Material	Location
12"X12" gray floor tile and black mastic	Throughout the Main Facility
Window glazing	Throughout the Main Facility minus the D and E Wings

Asbestos Inventory

For Any Questions Contact Mike Whitford

G.R. Whitfield School

Material	Location
9"X9" light brown floor tile and black mastic (covered by floor tile)	Classrooms 501 – 503
9"X9" brown floor tile and black mastic (covered by floor tile)	Classrooms 605 and 611
9"X9" tan floor tile and mastic (covered by carpet)	Room 616
12"X12" gold floor tile and black mastic (covered)	Throughout the Cafeteria Building
Chalkboards and chalkboard mastic (assumed positive)	Classrooms 601 – 607 and 611
Aircell pipe insulation, elbows, and joints on the steam lines	Throughout the 600 Wing above the plaster ceiling
Exterior window glazing	Throughout the Gymnasium Building
Exterior decorative trim	Below the roofline of the 600 Wing

Asbestos Inventory

For Any Questions Contact Mike Whitford

Grifton School

Material	Location
9"X9" gray floor tile	Throughout the 200 Wing and Classroom 504
12"X12" tan floor tile and black mastic	Hallway between the Main Office and the 300 Wing
9"X9" light green floor tile and black mastic	Classroom 107 and Storage Room
9"X9" red floor tile (covered by asbestos floor tile)	Classroom 107 and Storage Room
9"X9" gray floor tile and mastic (covered by floor tile)	Cafeteria
12"X12" olive floor tile and mastic	Right Stage Office in the Auditorium Building
12"X12" light green floor tile	Left Stage Office in the Auditorium Building
9"X9" tan floor tile and black mastic	Coach's Office and Concession Stand of the Gymnasium Building
12"X12" green floor tile and black mastic	Throughout the 700 Building
12"X12" black border floor tile and black mastic	Throughout the 700 Building
Unknown size floor tile of various colors and mastic (covered by asbestos floor tile)	Throughout the 700 Building
Chalkboards and chalkboard mastic (assumed positive)	Classrooms 201 and 203 – 211
Chalkboards and chalkboard mastic (assumed positive)	Classroom 501
Aircell pipe insulation, elbows, and joints on the steam lines	Throughout the 100 Wing above the plaster ceiling
White exhaust pipe wrap	Penetrating the ceiling and roof in the Gymnasium Mechanical Room
Exterior window glazing	Throughout the 200 Wing, Classrooms 303 – 306, Auditorium, and Gymnasium
12"X12" olive floor tile and mastic (covered by carpet)	Mobile Unit 1 (740-67-47)
Unknown size off-white floor tile (covered by asbestos floor tile)	Mobile Unit 1 (740-67-47)



Asbestos Inventory

For Any Questions Contact Mike Whitford

J.H. Rose High School

Material	Location
12"X12" dark tan floor tile and black mastic	Classroom 703
12"X12" beige floor tile and black mastic	Kitchen in the 700 Building

North Pitt High School

Material	Location
12"X12" off-white floor tile	Throughout the 100 and 200 Wings
Black floor tile mastic	Throughout the 300 Wing
Laboratory countertops	Classrooms 108, 109, 210, and 212
Fume hoods	Classroom 108
Fire doors	Throughout the 100 and 200 wings
Window glazing	Throughout the 100 and 200 Wings
Exterior dark brown transite panels of various sizes	Below the roofline at various locations around the Main Facility
Various size transite panels	Throughout the 1971 Section of the Main Facility

Asbestos Inventory

For Any Questions Contact Mike Whitford

Pactolus School

Material	Location
9"X9" green floor tile	Coaches Office, Athletic Storage Rooms, and the Mechanical Room adjacent to Classroom 417
9"X9" white floor tile	Mechanical Room adjacent to Classroom 417
12"X12" black floor tile (covered by floor tile)	Gymnasium
12"X12" light green floor tile	500 Wing Custodial Room
Chalkboards and chalkboard mastic (assumed positive)	Classrooms 500 – 503 and 506 – 508
Exterior window glazing	Classrooms 404 and 506 – 508

Sam D. Bundy School

Material	Location
9"X9" green floor tile and mastic (covered by floor tile and/or carpet)	Throughout the Main Office, rooms 718 – 721 and Classrooms 711 and 713
12"X12" light green floor tile and black mastic	Storage Room in Classroom 723
9"X9" off-white floor tile and mastic (covered by floor tile and/or carpet)	Classrooms 803 – 805 and the 800 Hallway
9"X9" beige floor tile and mastic (covered by floor tile)	Classroom 802
Chalkboards and chalkboard mastic (assumed positive)	Classrooms 707, 708, 710, 712, 714, 803, 806, 809 – 812, and 814 – 817
Pipe insulation on the steam lines from the Boiler Room (above the drop ceiling)	Classroom 723
Exterior window glazing	Throughout the 700 and 800 Wings

Asbestos Inventory

For Any Questions Contact Mike Whitford

South Greenville Elementary School

Material	Location
12"X12" brown border floor tile and black mastic	Classrooms 104, 105, 107, and Main Office
9"X9" black floor tile and black mastic (covered by floor tile)	Classrooms 104, 105, 107, 109, and 111
Black floor tile mastic	Classroom 105
9"X9" burgundy floor tile and mastic	Closet in Classroom 110
9"X9" chocolate floor tile and mastic (covered by floor tile)	Hallway of the 200 Building
9"X9" off-white floor tile and black mastic (covered by floor tile)	Cafeteria
12"X12" white floor tile and mastic	Auditorium stage
9"X9" red floor tile and black mastic (covered by floor tile)	Auditorium stage
9"X9" burgundy floor tile and mastic	Electrical Room on the Stage
9"X9" tan floor tile	Classrooms 201, 202, 206, and 208 – 211
9"X18" black border floor tile and mastic	Classrooms 206, 208 – 211, and the Custodial Room in the 200 Wing
9"X9" gray floor tile and mastic (some areas covered by floor tile or carpet)	Throughout the 300 Building
Chalkboards and chalkboard mastic (assumed positive)	All classrooms in the 100 and 200 Wings
Fire doors	Throughout the 100 Building
Black gasket	HVAC area in the Cafeteria
Aircell pipe insulation, elbows, and joints on the steam lines	Throughout the 100 Wing above the plaster ceiling
Insulation hard elbows	200 Hallway area above the exit door adjacent to the Cafeteria and the adjoining exterior storage room
Exterior window glazing	Throughout the 100 and 200 Wings

Asbestos Inventory

For Any Questions Contact Mike Whitford

Stokes School

Material	Location
9"X9" tan floor tile	Athletic storage room in the Gymnasium
Black Mastic	Throughout the White Building
Hard elbows and joints connecting the steam and water lines	Throughout the Gymnasium

Third Street Center

Material	Location
9"X9" light tan floor tile (covered by floor tile and/or carpet)	Throughout the Main Facility
Chalkboards and chalkboard mastic (assumed positive)	Classrooms 1, 2, and 4 – 9
Fire doors	Throughout the Main Facility

Transportation

Material	Location
Exterior window glazing	Throughout the Main Facility



Asbestos Inventory

For Any Questions Contact Mike Whitford

W.H. Robinson Elementary School

Material	Location
9"X9" gray floor tile and mastic	Classrooms 103, 105 – 107, 109, 112 – 118, 304, Guidance Offices, and the 100 Hallway
Unknown size dark brown floor tile and mastic (covered by asbestos floor tile)	Computer Lab, and Copy Room in the Media Center
12"X12" green floor tile and mastic	A/V Room in the Media Center
Chalkboards and chalkboard mastic (assumed positive)	Throughout the 100 Wing
Fire doors	Throughout the 100 Wing
Exterior window glazing	Throughout the 100 and 300 Wings
Exterior soffit panels	High section of the Gymnasium and the low, back side of the Gymnasium
White corrugated exterior fascia border (covered by roofing metal)	Throughout the 1958 Section
Exterior transite soffit panels	Throughout the 1952 Section
Transite Panels	Below the windows in the Cafeteria

Wahl Coates Elementary School

Material	Location
12"X12" off-white floor tile and black mastic	Throughout Buildings B – E, H, I, and the Main Office Building
Exterior gray soffit panels	Throughout Buildings A – E, H, I, and the Main Office Building
Exterior gray fascia panels	Below the roofline around Buildings E and H, Cafeteria, and the Gymnasium
Exterior 32"X48" exterior ceiling tiles	Under the canopies throughout Buildings E, H, I, and the Cafeteria



Asbestos Inventory

For Any Questions Contact Mike Whitford

Wellcome Middle School

Material	Location
12"X12" dark tan floor tile and black mastic	Throughout the Main Facility
Window glazing	Throughout the Main Facility (Does not include A-8 through A-15)

All assumed materials have not been sampled sufficiently to dispute that a material contains asbestos or has not been sampled but requires sampling prior to any renovation/demolition. All materials that are not sampled will be sampled prior to a planned renovation/demolition. This is due to the destructive techniques used to sample the material.

Asbestos Inventory Pictures

Please note the following asbestos inventory pictures are not all inclusive. Please see the Asbestos Inventory and Asbestos Locations Maps for a complete listing off all asbestos-containing materials.

The following pictures are of the most commonly found asbestos-containing materials at our sites.

A.G. Cox Middle School



12"X12" green floor tile and black mastic throughout the 100 Wing

A.G. Cox Middle School



12"x12" light green floor tile, 12"x12" black border floor tile, and mastic in the halls of the 120 Wing

A.G. Cox Middle School



9"X9" green floor tile, 9"X24" black border floor tile, and black mastic throughout the 120 Wing

A.G. Cox Middle School

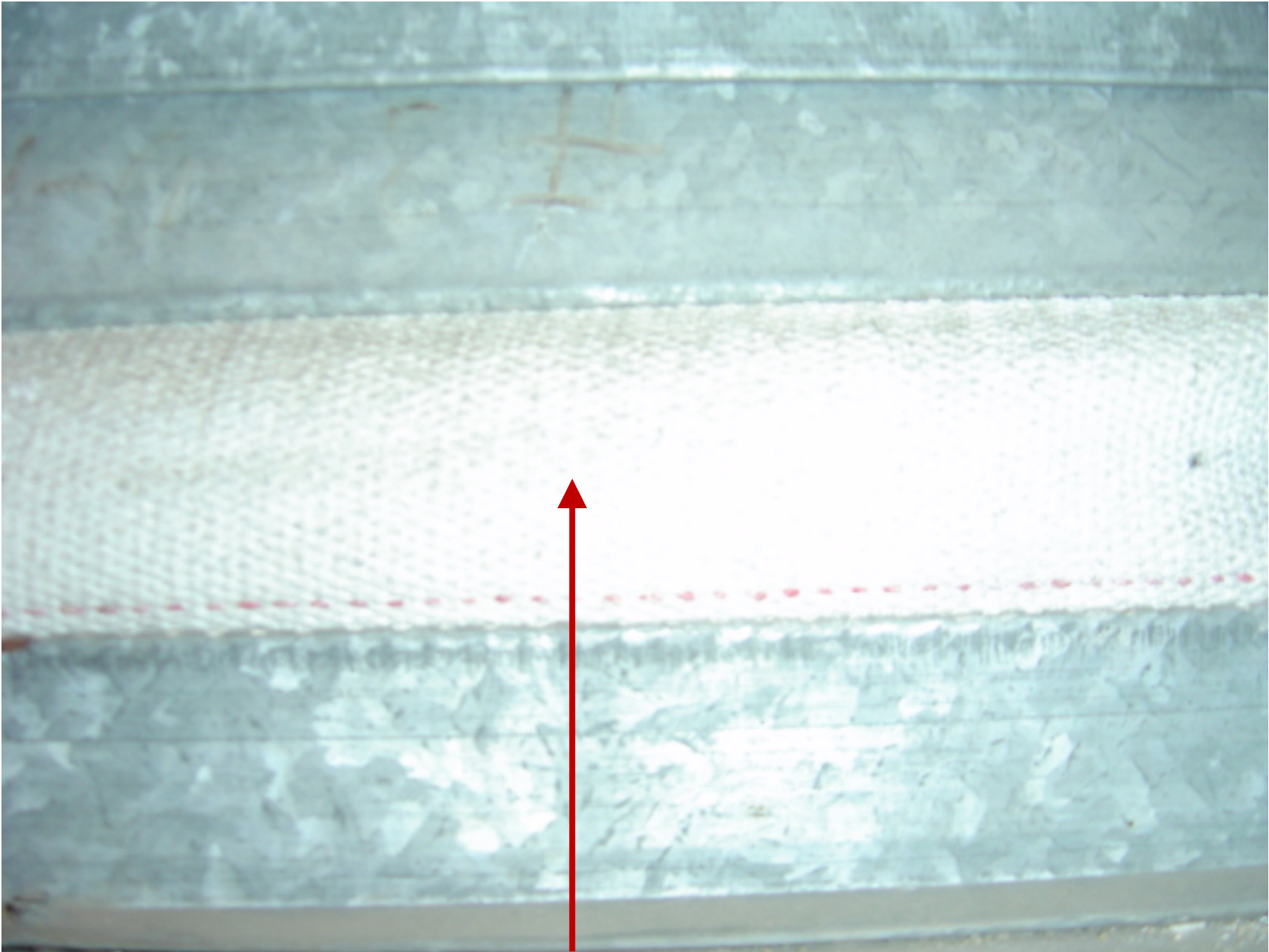


9"X9" light brown floor tile and black mastic in the Athletic Storage Room in the Gymnasium

A.G. Cox Middle School



12"X12" off-white floor tile and black mastic throughout the old section of the 200 Wing



Cloth gaskets on HVAC ductwork in Mechanical Rooms 1-5 in the old section of the 200 Wing

A.G. Cox Middle School



Exterior window glazing throughout the 120 Wing

A.G. Cox Middle School



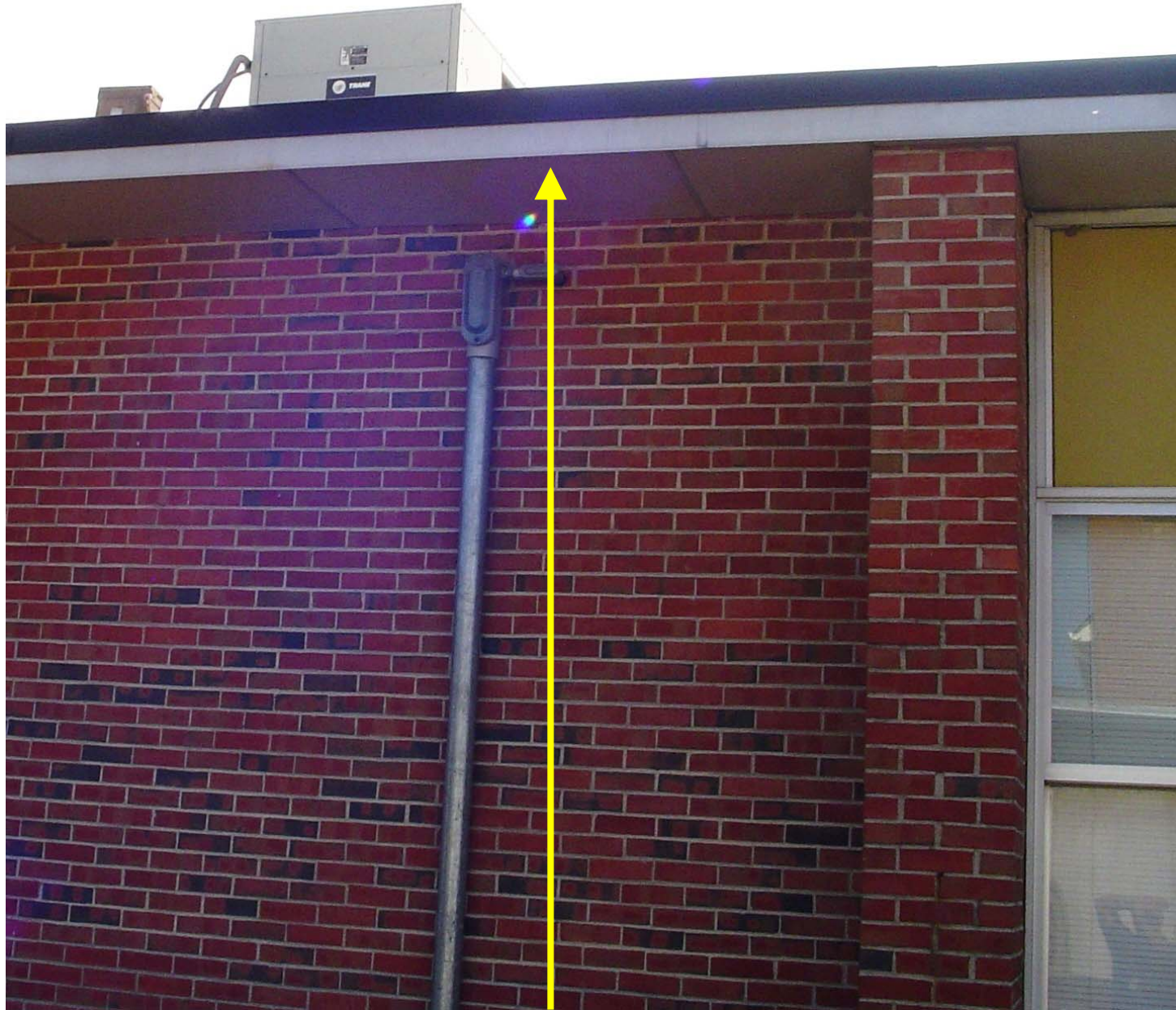
Exterior window glazing throughout the Gymnasium and Locker Rooms

A.G. Cox Middle School



Exterior window glazing and transite panels throughout the old section of the 200 Wing

A.G. Cox Middle School



Exterior 4'X2' gray soffit panels throughout the old section of the 200 Wing

Ayden Elementary School



Exterior window glazing throughout the B, C, and D Wings

Ayden Elementary School



Exterior window glazing throughout the D Wing

Ayden Grifton High School



12"X12" beige floor tile and black mastic throughout the Main Facility

Ayden Grifton High School



Laboratory countertops in Classrooms 201 – 204

Ayden Grifton High School



Insulation located on hot water tank in the Main Mechanical Room

Ayden Grifton High School



Window glazing and transite panels throughout the Main Facility

Belvoir Elementary School



12"X12" gold floor tile and black mastic throughout the 100 Wing

Belvoir Elementary School



12"X12" gray floor tile and black mastic in the Cafeteria and adjoining hallway

Belvoir Elementary School



9"X9" tan floor tile and mastic (covered by floor tile) throughout the Gymnasium Building

Belvoir Elementary School



9"X9" green floor tile and mastic (covered by floor tile) throughout the Gymnasium Building

Belvoir Elementary School



12"X12" green floor tile and mastic (covered by floor tile) in Classroom 403, Kiln Room, and Gymnasium Lobby

Belvoir Elementary School



Exterior white decorative fascia border below the roof line around the 300 Wing

Bethel School



12"X12" off-white floor tile throughout the Main Office and 100 and 200 Wings

Bethel School



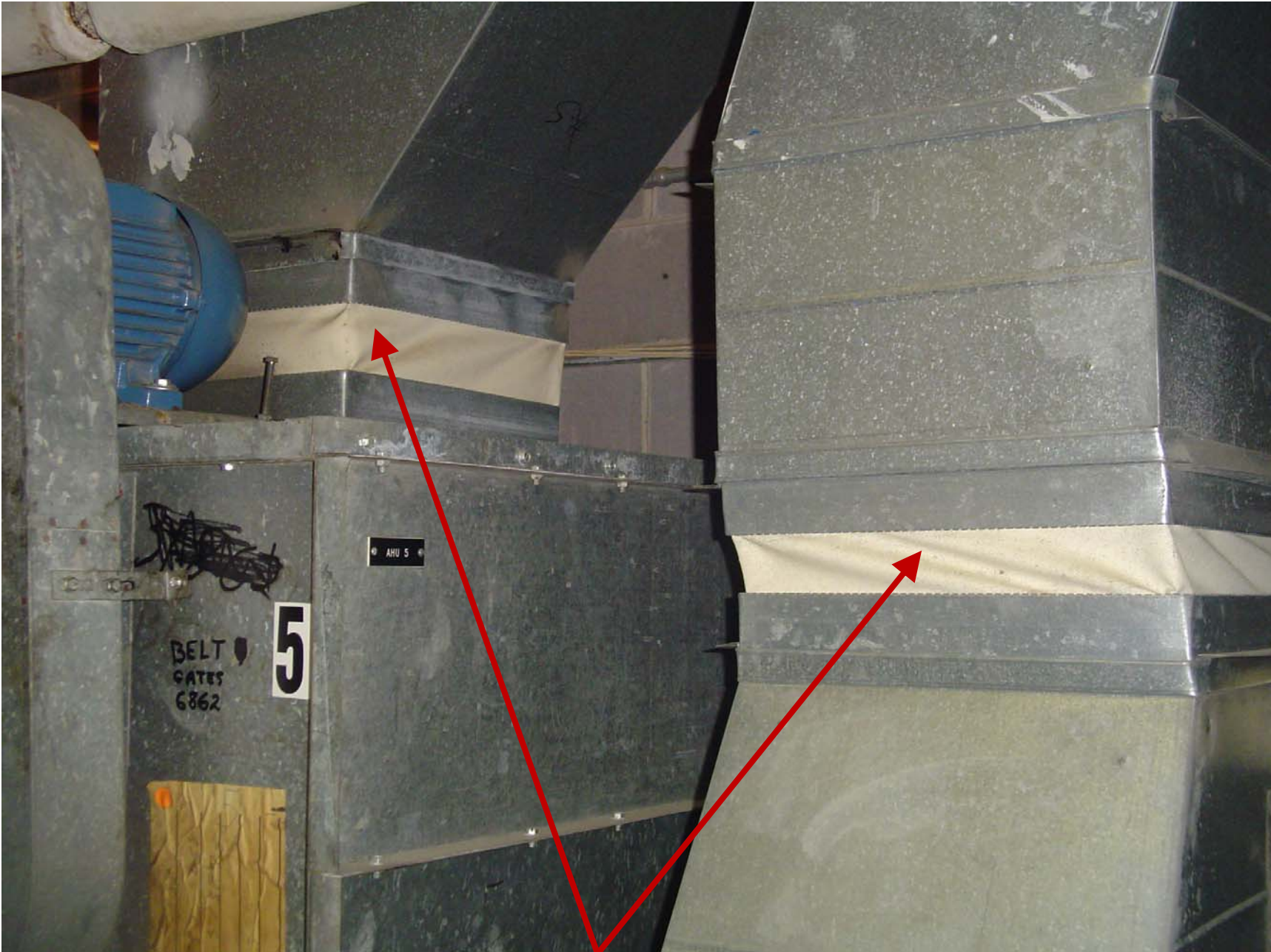
12"X12" white floor tile, 12"X12" brown border floor tile, and black mastic in the back hallway of the 300 Wing and front foyer of the Gymnasium

Bethel School



9"X9" tan floor tile and mastic in the Storage Room beside 313, Storage Room in 313, Coaches Office, and Equipment Storage Room in the 300 Wing

Bethel School



Cloth gaskets on HVAC duct in the Mechanical Rooms adjacent to the Media Center and behind the Main Office

Bethel School



Exterior window glazing throughout the Gymnasium Building

Bethel School



Exterior window glazing throughout the Gymnasium Building

Bethel School



Crème transite panels above and below the windows in Cafeteria

C.M. Eppes Middle School



9"X9" white with black accents floor tile in classrooms 105-108, 112-114, 203-209, the Media Center, and adjoining storage rooms of the Main Facility

C.M. Eppes Middle School



12"X12" off-white floor tile in Classrooms 115 – 119 and 210 – 218

C.M. Eppes Middle School



9"X9" white with black accents floor tile and mastic in the offices located adjacent to the Band Room

C.M. Eppes Middle School



12"X12" beige floor tile and mastic in Classrooms 160 though 163

C.M. Eppes Middle School



9"X9" tan floor tile in Annex Building I (Technology)



Hard pipe insulation elbows and tar throughout the Main Facility crawlspace

C.M. Eppes Middle School



Exterior window glazing throughout the Main Facility

C.M. Eppes Middle School



Exterior light tan transite panels below the roofline around the Annex Building II – Testing and Servers (1970 Building)

Chicod School



12"X12" green floor tile and mastic in Classrooms 101 and 105

Chicod School



12"X12" brown floor tile and black mastic in the hallway between the locker rooms

Chicod School



12"X12" light tan floor tile and mastic in the stairwells of the two-story building

Chicod School



12"X12" dark gold floor tile in Classrooms 211 and 212

Chicod School



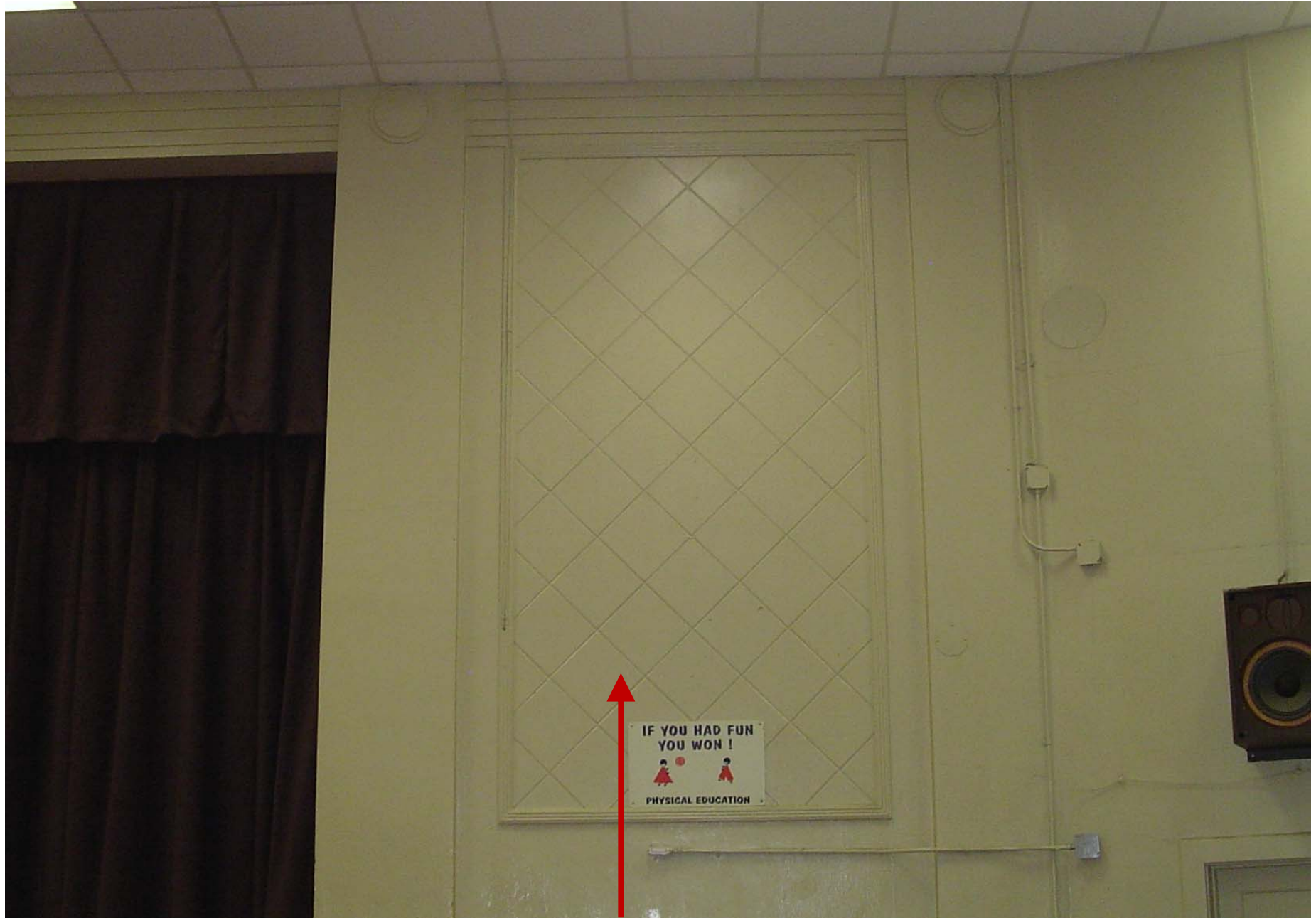
12"X12" dark gold floor tile in Classrooms 305 – 308 and the adjoining hallway

Chicod School



12"X12" light brown floor tile in Classrooms 306 and 308

Chicod School



12"X12" white wall tile and tile mastic on the stage area in the Gymnasium

Chicod School



Window glazing in Classrooms 103, 105, and 107

D.H. Conley High School



12"X12" off-white floor tile and black mastic throughout the 100 and 200 Wings

D.H. Conley High School



Light gray window glazing throughout the 100 and 200 Wings

D.H. Conley High School



Exterior dark brown transite panels of various sizes below the roofline at various locations around the Main Facility

E.B. Aycock Middle School



12"X12" olive floor tile and black mastic throughout the Main Facility

E.B. Aycock Middle School



9"X9" off-white floor tile and black mastic in Classrooms 70 and 71

E.B. Aycock Middle School



Insulation located on the hot water storage tank in the Boiler Room

E.B. Aycock Middle School



Window glazing in the Locker Rooms

E.B. Aycock Middle School



Window glazing and various size cream transite panels on the West wall of the Main Facility

Elmhurst Elementary School



9"x9" off-white floor tile, 9"x9" black border floor tile, and mastic in the Cafeteria, Classrooms 5, 6, and 29, Teachers Lounge, Safe, Lobby, & throughout hallways

Elmhurst Elementary School



9"X9" tan floor tile with burgundy accents, 9"X9" burgundy border floor tile, and mastic in Classrooms 1 – 4 and 7 – 14

Elmhurst Elementary School



9"X9" dark green floor tile and mastic (covered by floor tile) in the hallway outside of the Media Center

Elmhurst Elementary School



Exterior window glazing and white decorative fascia border throughout the Main Facility

Elmhurst Elementary School



Exterior window glazing and white decorative fascia border throughout the Main Facility

Falkland Elementary School



12"X12" light brown floor tile, 12"X12" dark brown border floor tile, and mastic in the Teachers Lounge, SIMS Office, and Front Office

Falkland Elementary School



12"X12" white floor tile and mastic in the 100 Wing hallway and restroom lobby of Classrooms 103 and 105

Falkland Elementary School



9"X9" tan floor tile and black mastic in Classrooms 103 – 105, 117, Custodial Room, 100 Hall Storage Room, and 100 Wing hallway

Falkland Elementary School



12"X12" light tan floor tile (partially covered by carpet) in Classrooms 103 and 105

Falkland Elementary School



12"X12" brown speckled border floor tile (partially covered by carpet) in Classrooms 103 and 105

Falkland Elementary School



12"X12" black border floor tile and mastic in Rooms 205 – 207

Farmville Central High School



9"X9" tan floor tile and black mastic throughout the Main Facility

Farmville Middle School



12"X12" gray floor tile and black mastic throughout the Main Facility

Farmville Middle School



Window glazing throughout the Main Facility minus the D and E Wings



12"X12" gold floor tile and black mastic (covered) throughout the Cafeteria Building

G.R. Whitfield School



Exterior window glazing throughout the Gymnasium Building

G.R. Whitfield School



Exterior decorative trim below the roofline of the 600 Wing

Grifton School



9"X9" gray floor tile throughout the 200 Wing and Classroom 504

Grifton School



12"X12" tan floor tile and black mastic in the hallway between the Main Office and the 300 Wing

Grifton School



9"X9" light green floor tile and black mastic in Classroom 107 and Storage Room

Grifton School



9"X9" tan floor tile and black mastic in the Coach's Office and Concession Stand of the Gymnasium Building

Grifton School



12"X12" green floor tile and black mastic throughout the 700 Building

Grifton School



12"X12" black border floor tile and black mastic throughout the 700 Building

Grifton School



Black chalkboard mastic (assumed) in Classrooms 201, 203 – 211, and 501

Grifton School



Exterior window glazing throughout the 200 Wing

Grifton School



Exterior window glazing in Classrooms 303 – 306

Grifton School



Exterior window glazing in the Auditorium Building

Grifton School



Exterior window glazing in the Gymnasium

Pactolus School



9"x9" green and white checkerboard floor tile in the Coaches Office, Athletic Storage Rooms, and the Mechanical Room adjacent to Classroom 417

Pactolus School



12"X12" light green floor tile in the 500 Wing Custodial Room

Pactolus School



Exterior window glazing in Classrooms 404 and 506 – 508

Sam D. Bundy School



12"X12" light green floor tile and black mastic in the Storage Room in Classroom 723

Sam D. Bundy School



Exterior window glazing throughout the 700 and 800 Wings

South Greenville Elementary School



9"X9" burgundy floor tile and mastic in the Electrical Room on the Stage

South Greenville Elementary School



9"X9" tan floor tile in Classrooms 201, 202, 206, and 208 – 211

South Greenville Elementary School



9"X18" black border floor tile and mastic in Classrooms 206, 208 – 211, and the Custodial Room in the 200 Wing

South Greenville Elementary School



9"X9" gray floor tile and mastic (some areas covered by floor tile or carpet) throughout the 300 Building

South Greenville Elementary School



Exterior window glazing throughout the 100 and 200 Wings

Stokes School



9"X9" tan floor tile in the athletic storage room in the Gymnasium

Stokes School



Hard elbows and joints connecting the steam and water lines throughout the Gymnasium

Transportation



Exterior window glazing throughout the Main Facility

W.H. Robinson Elementary School



9"X9" gray floor tile and mastic Classrooms 103, 105 – 107, 109, 112 – 118, 304, Guidance Offices, and the 100 Hallway

W.H. Robinson Elementary School



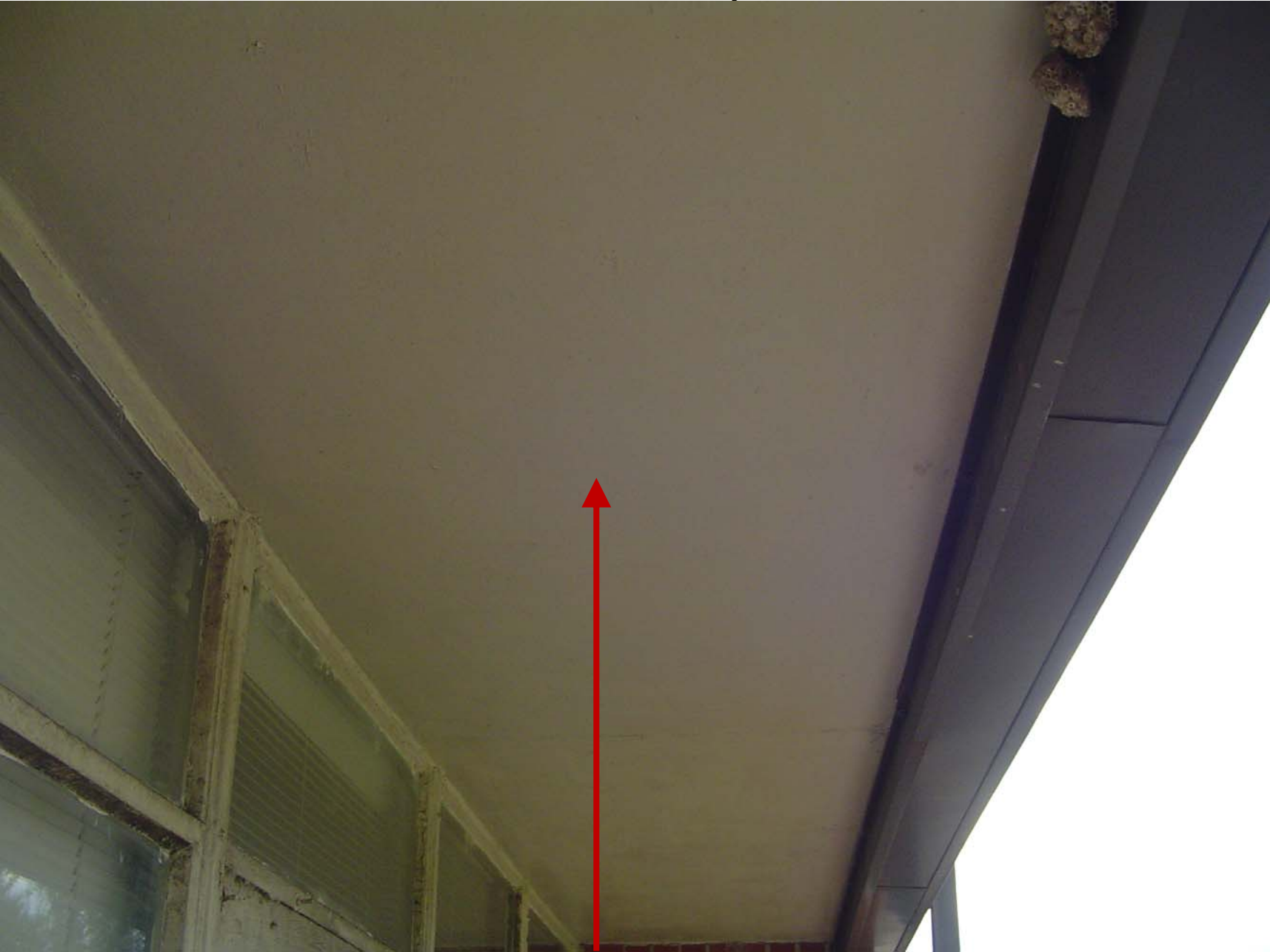
Exterior window glazing throughout the 100 and 300 Wings

W.H. Robinson Elementary School



Exterior soffit panels High section of the Gymnasium and the low, back side of the Gymnasium

W.H. Robinson Elementary School



Exterior transite soffit panels throughout the 1952 Section

W.H. Robinson Elementary School



Transite Panels below the windows in the Cafeteria

Wahl Coates Elementary School



12"X12" off-white floor tile and black mastic throughout Buildings B – E, H, I, and the Main Office Building

Wahl Coates Elementary School



Exterior gray soffit panels throughout Buildings A – E, H, I, and the Main Office Building

Wahl Coates Elementary School



Exterior gray fascia panels below the roofline around Buildings E and H, Cafeteria, and the Gymnasium

Wahl Coates Elementary School



Exterior 32”X48” exterior ceiling tiles under the canopies throughout Buildings E, H, I, and the Cafeteria

Wellcome Middle School



12"X12" dark tan floor tile and black mastic throughout the Main Facility

Wellcome Middle School



Window glazing throughout the Main Facility (Does not include A-8 through A-15)